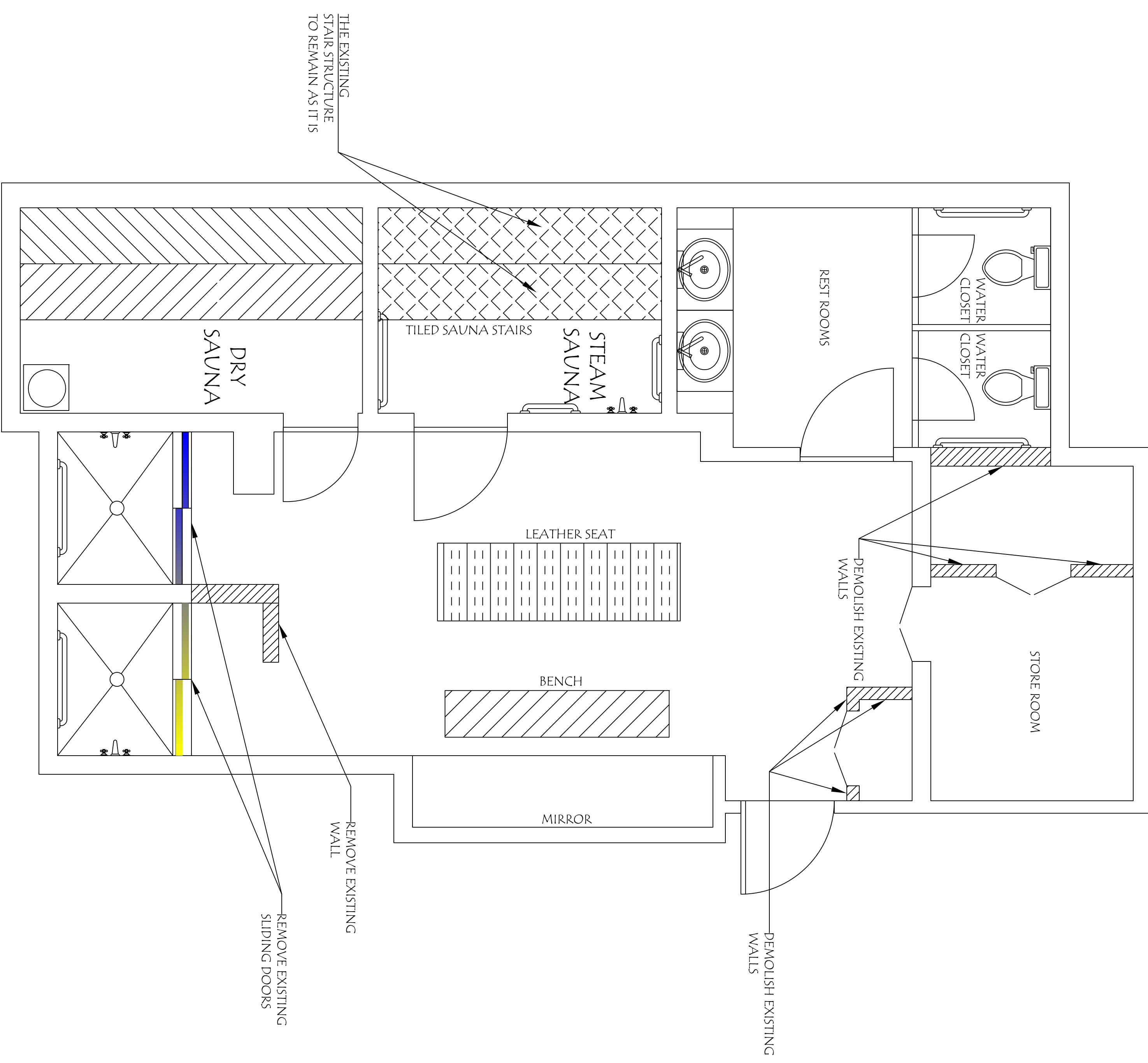


NOTE: "TO DEMOLISH"

- REMOVE EXISTING FLOOR TILES
- REMOVE EXISTING WALL TILES
- REMOVE COUNTERTOP & SINKS
- REMOVE URINAL & TOILETS
- REMOVE PLUMBING FIXTURES
- REMOVE TOILET PARTITIONS
- REMOVE EXISTING WALL BOARDS
- SAUNA WOOD TO REMAIN
- REMOVE INTERIOR DOORS

NOTE: TO SCRUTINIZE

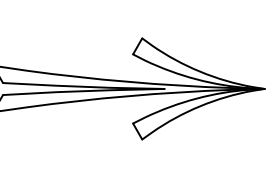
- EXISTING PLUMBING AND FLOOR DRAINS TO BE SCRUTINIZED FOR ANY LEAKAGE OR DETERIORATION
- EXISTING ELECTRICAL WIRINGS TO REMAIN AS IT IS WITH OUTLETS OR FIXTURES TO BE REPLACED
- EXISTING MECHANICAL TO BE SCRUTINIZED FOR ANY LEAKAGE OR DETERIORATION
- EXISTING SAUNA WOOD TO REMAIN



DEMOLITION PLAN

NORTH

SCALE: 1/2"=1'-0"



Seal

EXISTING BATHROOM RENOVATION:
AQUARIUS CONDOMINIUMS ASSOCIATION
 2751, SOUTH OCEAN DRIVE, FLORIDA

S&D Engineering and Construction, Inc

3107 N.W. 71st. Ave.
 Margate, Florida 33063
 QB# 52647 COA# 28388

Tel: (954) 775-0143
 Fax: (754) 229-8401

Date: 04/10/2016
 Drawn: NAD
 Revised: NAD
 Revision: 1

FAROUKH SAYED
 P.E.# 64701

Job No.
 15084

Drawing No.

S-3